

PEB STEEL ALLIANCE LTD



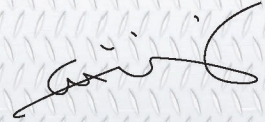
PEBSAL PORTFOLIO



At PEBSAL we are committed to pursue our business affairs with integrity and honesty; be trustworthy and dependable to our customers; be fair and tolerant towards our competitors; be generous and just to our employees; and dedicate our entire soul and mind to the business.



Engr. Newaz Khan
Chairman



Jowher Rizvi
Managing Director





WELCOME TO PEB STEEL ALLIANCE LTD

Introduction

Vision

Mission

Values

Organogram

Senior Management

Quality Certifications

Milestones



Introduction

PEB Steel Alliance Ltd (PEBSAL) is the first State of the Art Pre-Engineered Steel Building Manufacturing Company in Bangladesh. Fully equipped with modern machineries and equipment, the fabrication of steel structures is in line with international design codes.

Vision

PEBSAL to be recognized as the bench mark in the steel building industry of the Region

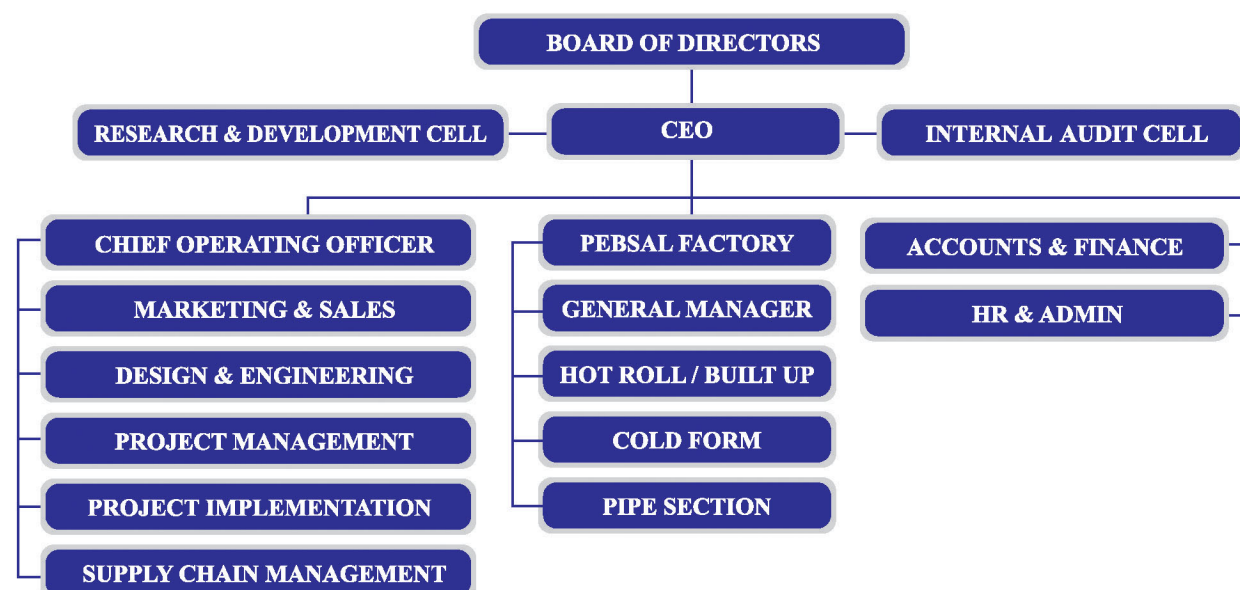
Mission

- + To design, fabricate and deliver safe and technologically advanced buildings.
- + To build cost effective steel buildings benefiting from "economies of large scale".
- + To offer customers versatility in design and fabrication that meets their exact requirements.
- + To maintain the highest level of quality and commitment to fulfill the customers needs
- + To offer customer services second to none in the industry.

Values

- + Be a leader not a follower
- + Share knowledge and success with others
- + Forge local alliances wherever we go
- + Apply only the latest design and building codes
- + Continually improve our products through product perfection, new technology, new equipment and training
- + Ensure best possible customer service as customers are our lifetime partners
- + The longest journey starts with the smallest step, so begin with the end in mind and focus on the long term, not just the short term
- + Recognize and value the Human Resource that is contributory to the success and pride of PEBSAL

Organogram



Senior Management

The company is spearheaded by veterans who introduced steel building in Bangladesh along with solid business background. The sheer combination of engineering excellence and sound financial expertise at the top of the company provides a most economic and qualitative product to its client.



Engineer Newaz Khan completed his Higher Secondary School Certificate in the merit list from Faujdarhat Cadet College, a premium institution of Bangladesh. He holds a Bachelor Degree in Mechanical Engineering from Lahore, Pakistan and is an MBA from IBA, Dhaka University.

He is credited with the establishment of Dhaka Lamps under the aegis of Singer, establishment of Bandbox, the first Dry Cleaning chain in Bangladesh, establishment of Multi Products Ltd, a pioneer in Fire Detection and Alarm System that introduced Johnson Controls, Viking, Western Air Ducts, Ansul, Air Group, VHM, etc in Bangladesh.

He is the pioneer in introducing the concept of Steel Buildings in Bangladesh for Zamil Steel of the Kingdom of Saudi Arabia, selling over 800 buildings in Bangladesh, Maldives, Yemen and Sudan. He also oversaw the erection of the steel building of Grand Hotel Marriot in Kabul, Afghanistan. His latest effort is the establishment of the first JV, PEB Steel Alliance Ltd in Bangladesh.

He is currently Chairman of:

- PEB Steel Bangladesh Ltd
- Nekan Engineering Ltd

A trailblazer, he continues to introduce new concepts and ideas.



Jowher Rizvi completed his MBA degree in International Finance and Accounting from Indiana University, USA. He also earned an MA in Economics with Honors from Dhaka University.

Mr. Rizvi started his professional career with Bank of Credit and Commerce International (BCCI) in 1977 and at the same time was engaged with Institute of Business Administration (IBA) as a part time (Honorary) Lecturer. From 1991 to 1997, he served Union Bank Zambia Ltd as its founder Managing Director, taking it to the 2nd leading position in Zambia and had his achievements recognized with the prestigious Banker of the Year award.

He established Alliance Holdings Ltd. (AHL) in 1997. In partnership with Summit Group, entered the Off-Dock business with Ocean Containers Limited. In 2003, the two sponsors jointly established Summit Alliance Port Limited, A public Limited Company which is listed with two major bourses of the country.

Other Enterprises of Alliance Holdings Ltd are:

- | | |
|--|----------------------------|
| • Summit Alliance Port Ltd | • Oriental Oil Company Ltd |
| • Ispahani Summit Alliance Terminals Ltd | • PEB Steel Bangladesh Ltd |
| • Union Knitting and Dyeing Ltd | • Union Accessories Ltd |
| • Fountain Garments Ltd | |

In spite of his busy schedule, he still finds time to pursue his favorite passion and teaches on part time (honorary) basis at North South University (NSU), Chittagong Port Authority Training Academy and National Defence College (NDC)

The departments of the company are led by highly competent and committed group of professionals. The company believes in the competency and commitment of its members as the driving force to achieve what may apparently seem impossible.

Quality Certifications

PEBSAL is an ISO 9001:2008 and OHSAS 14000:2007 certified company. It is also an Associate Member of AISC



Milestones

- **25 Apr 06** : Formation of PEB Steel Alliance Ltd
- **11 Mar 08** : Awarded 2 ADB funded project for building of 84 school in earthquake devastated regions of Pakistan. Followed by 9 more contracts to build 296 schools worth US\$ 19.8 million.
- **23 Dec 08** : Built the first multi storied office, MTB Centre on Gulshan Avenue
- **22 Jan 10** : Built the SAF Games Torch
- **12 Nov 10** : Built a Power plant for TSK Spain
- **05 Nov 11** : Awarded ISO 9001 : 2008 by Bureau Veritas
- **12 Oct 12** : Launches its official website www.pebsteelalliance.com.
- **20 Jun 14** : Completed Holcim Cement Factory following Euro Code
- **23 Oct 14** : Awarded ISO 9001: 2008 by AGS, LLC, Montecito, CA, USA
- **06 Nov 14** : Only PEB company in Bangladesh to receive Associate Membership of AISC
- **03 Mar 15** : Coca Cola, the no 1 brand in the world, awards its project to PEBSAL
- **30 Jun 15** : PEBSAL innovates, fabricates and delivers -Porta Cabin to Bangladesh Army contingents for UN Mission in Central African Republic and Mali
- **10 Jul 15** : NBR confers award to PEBSAL for being the Highest VAT Payer in Manufacturing Category in Comilla District 2013 - 2014.
- **07 Aug 15** : Participates in the 'Safe Home Expo 2015' in Kathmandu, Nepal.
- **12 Nov 15** : Awarded OHSAS 18001: 2007 by AGS, LLC, Montecito, CA, USA
- **25 Apr 16** : PEBSAL celebrated 10 years of its successful journey
- **30 Sep 16** : PEBSAL introduces Standing Seam Roofing a new concept using clips in Nasir Glass covering approx 450,000 sq ft of roof with virtually no possibility of rain water leaking
- **24 Jan 17** : Celebrates 3 million safe man working hour with Coca-Cola (IBPL)
- **Ongoing** : PEBSAL continues building the 26th factory building of Youngone at KEPZ covering a cumulative area of 1,840,776 sq ft (approx).



PEBSAL FACTORY

Description of the Factory

Management

Machineries, Equipments and Facilities

Quality Assurance

Delivery





Description of the Factory

The PEBSAL factory is located 112 km from Dhaka on the Dhaka - Chittagong highway and the facility is spread over an area of 1,200 decimal of land. The manufacturing plant boasts 250,000 sq ft of floor area. The production capacity of the factory is currently 24,000 MT per annum.

The factory building is an example of portraying engineering excellence and innovation. It is constructed using a combination of PEB's castellated beams and open web joists. The roof is profiled using Lokseam, which is a leak proof roof system recently introduced by PEBSAL.

Management

The factory management is run by highly experienced local and international staff. Most of the senior staff have international and multi national exposure. From planning to production, from quality to maintenance the team is more than capable of delivering the very best to its elite clients.

Machineries, Equipments and Facilities

CNC Hydraulic Guillotine Plate Shear Machine (up to 20mm thick)
 CNC Oxy-fuel Plate Profile Cutting Machine (one with Plasma cutter)
 Auto Cutter (Koike)
 CNC Drill Machine
 GEKA Ironworker
 I - Section Assembly Machine
 Submerged Arc Welding Machine with Roller tables
 Submerged arc Welding Machine (ESAB)
 MIG Welding Machine (Lincoln)
 Gouging Machine (Lincoln)
 Magnetic Drill Machine (March)
 Shot Blast Machine - For job size up to: 1.7-2.0M (H) X 1.0-1.4M (W) X 12.0M (L)
 Graco Spray Machine
 Air Dryer
 Painting Chamber (On line with monorail)
 Plate Bending Machine (up to 20mm thickness X 3000mm width)
 Boom Welding System (Pipe Plant - up to 3.5M Dia pipe)
 Plate Beveling Machine
 Roof Panel Machine (PE - 1000)
 Wall Panel Machine (PW - 900)
 Liner Panel Machine
 C - Purlin Machine (200 - 250)
 Z - Purlin Machine (200 - 250)
 Decking Panel Machine
 Lock-seam Machine
 Panel Curving Machine
 Sheet Shearing Machine
 Sheet Bending Machine
 Roll Forming Machine for Down Pipe
 Air Compressor
 Mobile Crane (Escorts - Hydra) 10 - 14 T Capacity
 Overhead Crane (1.5 to 15T)
 2T Jib Crane
 12' Bed Length Lathe Machine
 Heavy Duty Radial Drill Machine
 40mm Capacity Bar Bending Machine

CNC Hydraulic Guillotine Shear



Cuts steel plates up to 6000 mm width and 16 mm thickness

CNC Oxy-fuel Profile Cutting Machine



Cuts steel plates 18000 mm length, 2500 mm width and 3-100 mm thickness

Geka Ironworker (Shearing & Punching)



5 work stations for shearing, cutting of angles, notching and punching.

Submerged Arc Welding (SAW) Lines



Welds H-Sections 150-400 mm flangeX300-1200 mm web @ .5-2.5 m/min

Hydraulic Guillotine Shear



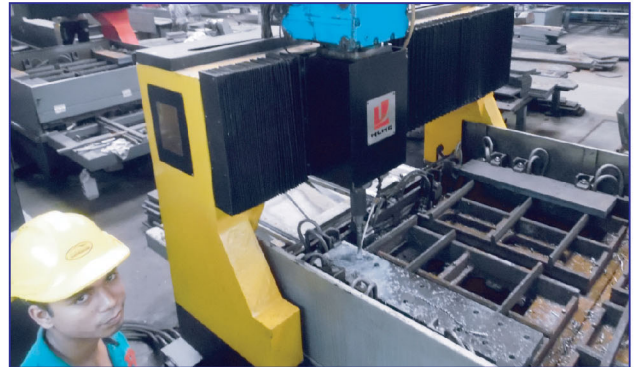
Cuts steel plates up to 6000 mm width and 10 mm thickness

CNC Oxy-fuel Plasma Cutting Machine



Cuts steel plates 18000 mm length, 2500 mm width and 3-100 mm thickness

CNC Drill



Drills hole of diameter 50 -70 mm

Fabrication Cells



Comprises of Fitter, MIG Welders & Helpers for "Fit-up Cells"

Shot Blasting Machine



Max size of member 12000 mm (L), 1400 mm (W) & 2000 mm (H)

Airless Graco Painting



Painting capacity of 60 MT / Day

CNC Pipe Bending Machine



Bends Steel Plates up to 30 mm thickness

Pipe Welding Machine



Welding Machine for Longitudinal & Circumferenc Welding

Roof Panel Machine



Fabricates roof panels of 1000 mm width & 0.47 - 0.6 mm thickness

Wall Panel Machine



Fabricates wall panels of 900 mm width & 0.47 - 0.6 mm thickness

Z - Purlin Machine



Fabricates Z- Purlins of 1.5 - 2.5 mm thickness

C - Purlin Machine



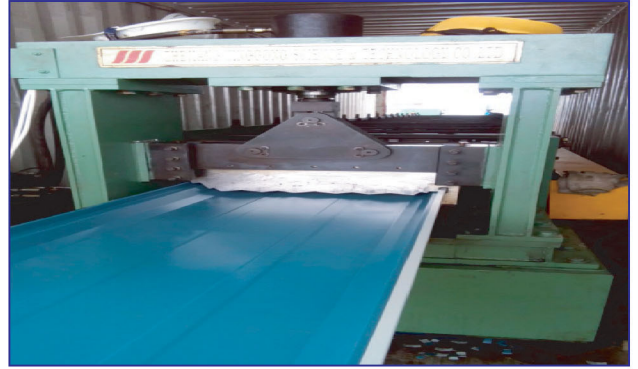
Fabricates C- Purlins of 1.5 - 2.5 mm thickness

Liner Panel Machine



Fabricates liner panels of 1090 mm width & 0.47 - 0.6 mm thickness

Standing Seam Machine



Fabricates panels of 500 - 480 mm width & 0.5 - 0.6 mm thickness

Sheet Shearing Machine



Cuts max 4000 mm width & 3 mm thickness

Decking Panel Machine



Fabricates panels of 1000 mm width & 0.7 - 1.2 mm thickness

Panel Curving Machine



Used for curving 1000 mm roof panels (Canopy Panels)

Bending Machine



Used for bending sheets of 4000 mm length & 0.5 - 6 mm thickness

A View of Main Cutting Bay



A wide angle view of main cutting bay

A View of Main Fabrication Bay



A wide angle view of main fabrication bay

Quality Assurance

PEBSAL is an ISO 9001:2008 certified company and boasts of maintaining the highest standard of quality that can only be matched by a few international companies in the region. PEBSAL has remained focused since its inception to offer quality product to its very precious clients, who decline to compromise price for quality.

The company pursues to develop this attitude amongst all members of the PEBSAL family and today the same is imbibed in their core.

To achieve this standard PEBSAL has incorporated a host of equipment and instrument. It is with the help of these equipments/ instruments/ software and the stringent attitude of every member of PEBSAL that this level is attained.

PEBSAL takes pride to be the leader in quality in Bangladesh and through continual improvement, is committed to remain so in the future as well.



Delivery

With a fleet of its own trailers, trucks and pickups, PEBSAL is well poised to deliver project material to site on time without depending on external logistic support companies. However, should there be a need, a number of out sourced, reliable and long time logistic partners are available to provide the needed support at short notice.



PRE ENGINEERED BUILDING

Pre-Engineered Building Components

Standard Framing Systems

Structural Subsystem

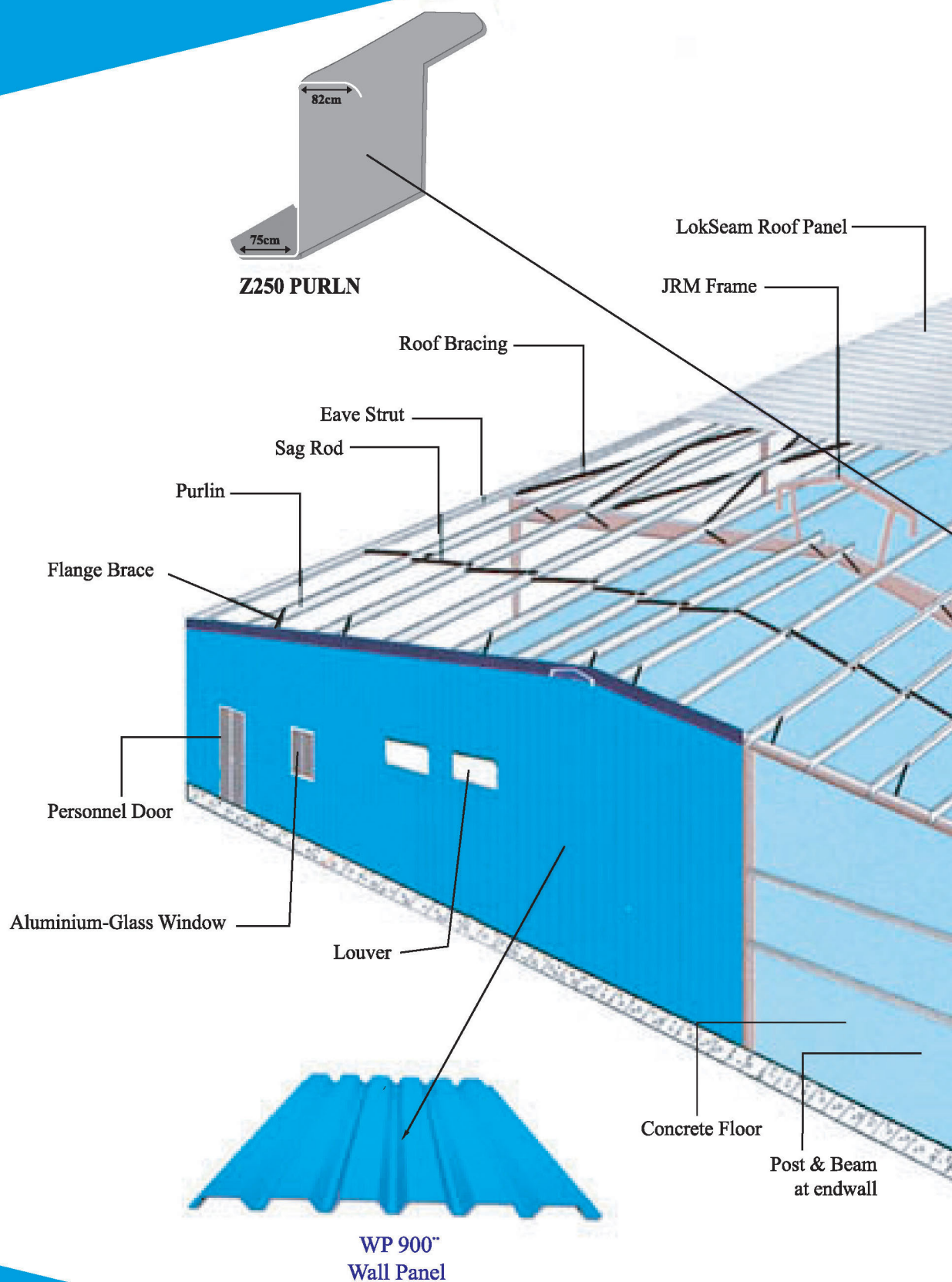
Roof & Wall Panel

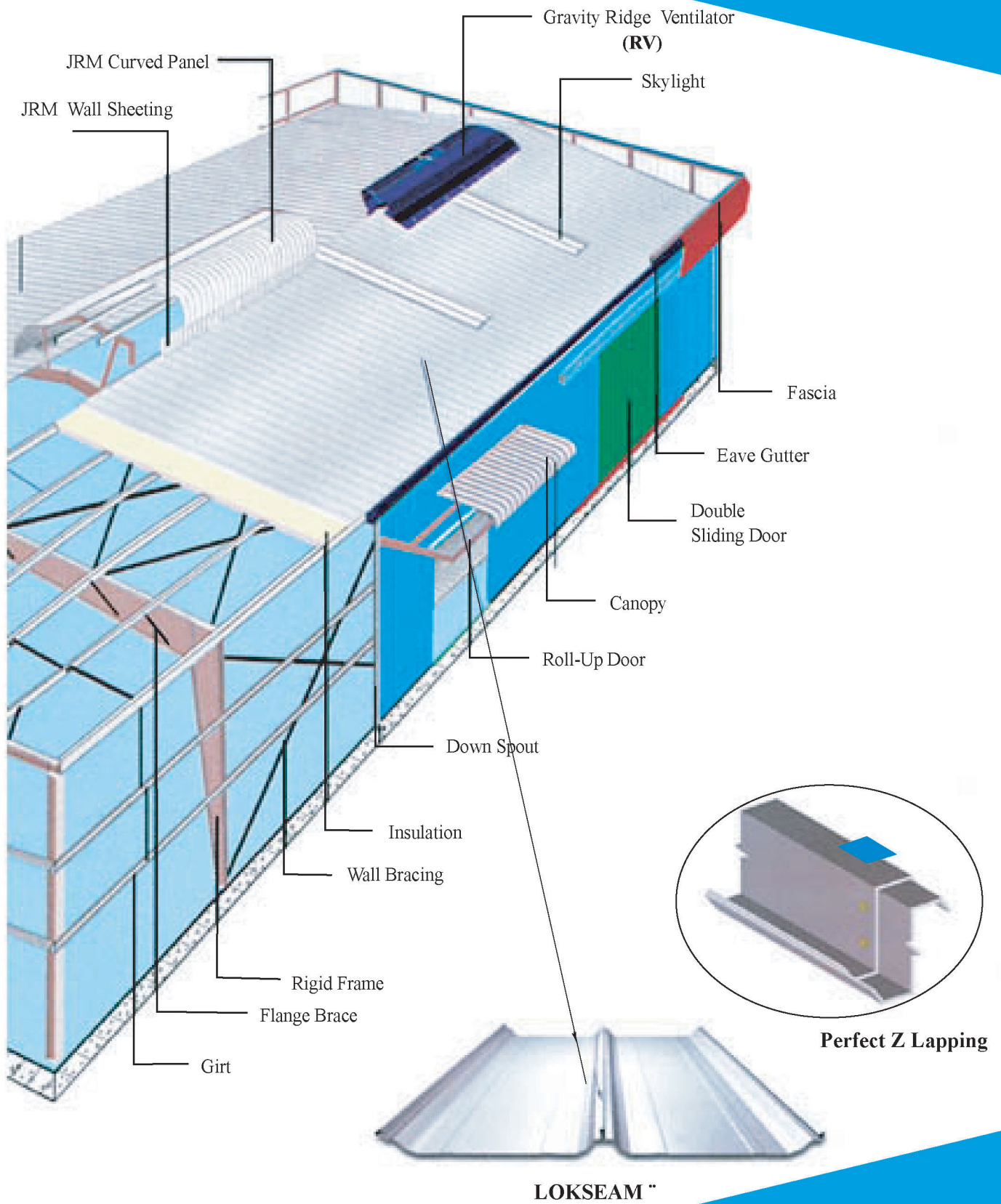
Ridge Vent, Purlin, Down Spout

Building Accessories

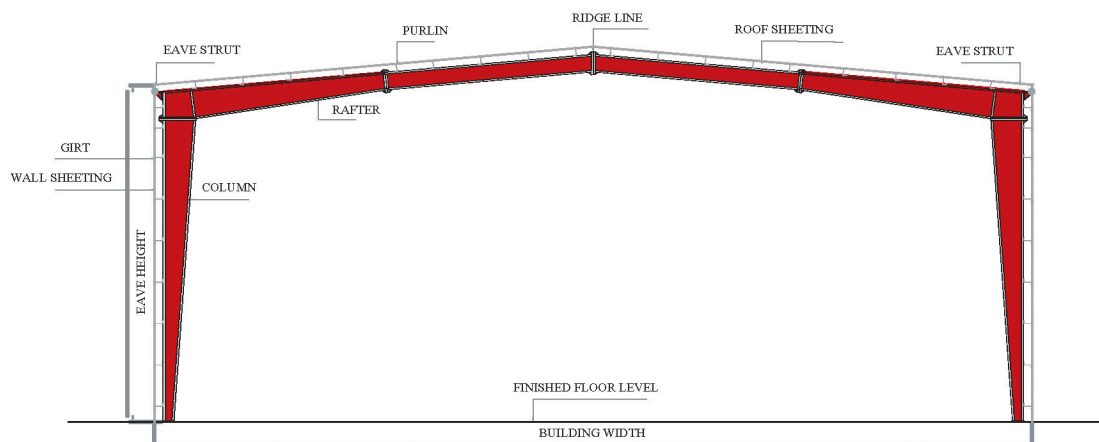


Pre-Engineered Building Components

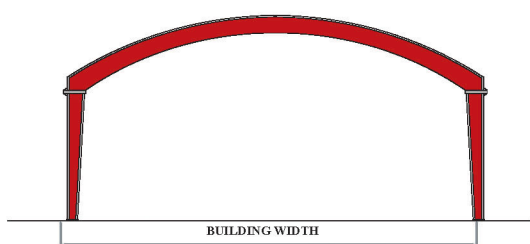




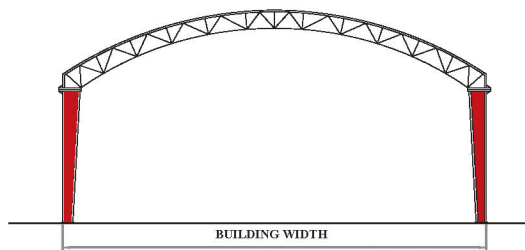
Standard Framing Systems



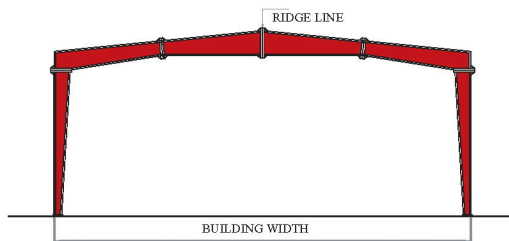
TYPICAL CROSS SECTION



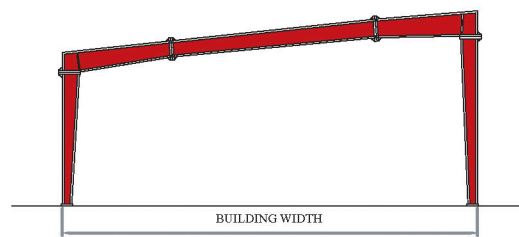
MAX. PRACTICAL WIDTH=100 m
Built-up Curved Rafter (BU)



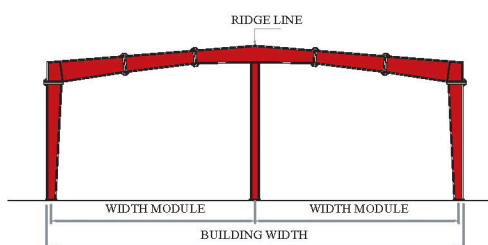
MAX. PRACTICAL WIDTH=100 m
Open- Web Curved Rafter (OW)



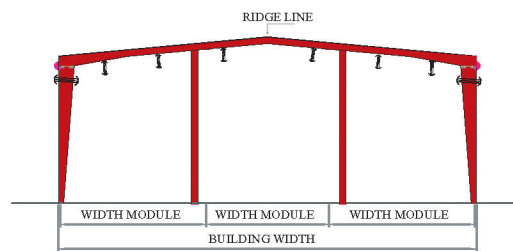
MAX. PRACTICAL WIDTH=100 m
Clear Span (CS)



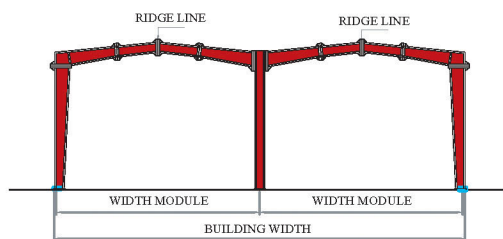
MAX. PRACTICAL WIDTH= 50 m
Single Slope (SS)



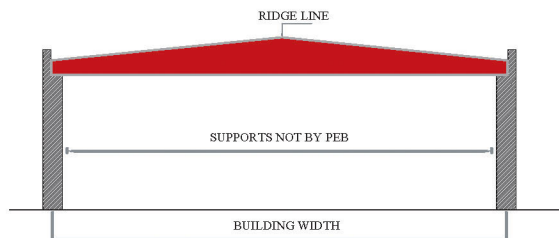
MAX. PRACTICAL WIDTH=150 m
Multi-Span "1" (MS-1)



MAX. PRACTICAL WIDTH= 200 m
Multi-Span "2" (MS-2)



MAX. PRACTICAL WIDTH= 200 m
Multi-Gable (MG)

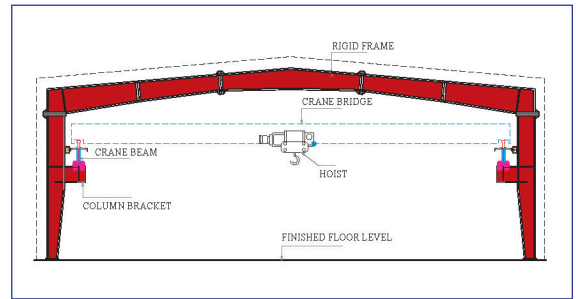


MAX. PRACTICAL WIDTH= 50 m
Roof System (RS)

Structural Subsystem



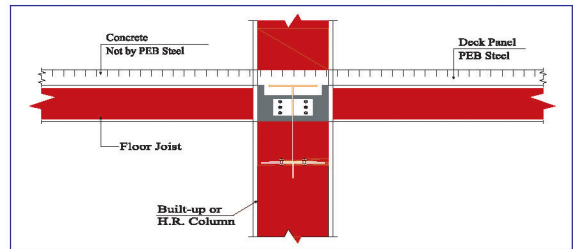
Crane System



Crane System



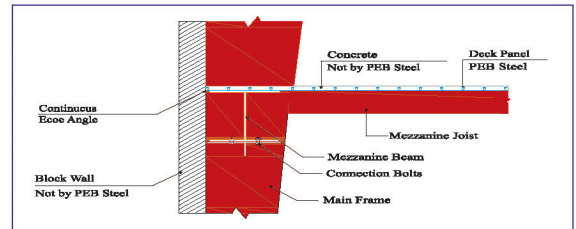
Mezzanine Joist Connection to mezzanine beam



Mezzanine Joist Connection to mezzanine beam



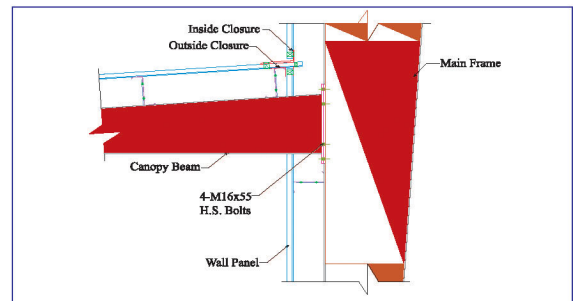
Mezzanine Beam Connection to Main Frame Column



Mezzanine Beam Connection to Main Frame Column



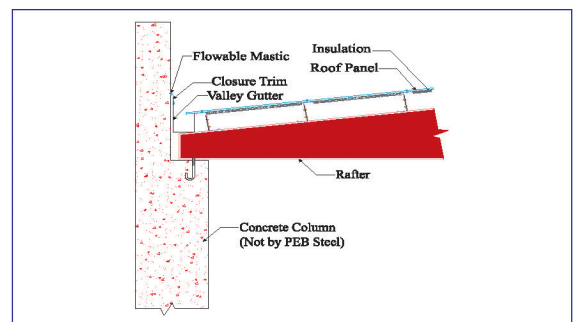
Rigid Frame with Canopy



Rigid Frame with Canopy



Roof System with Insulation

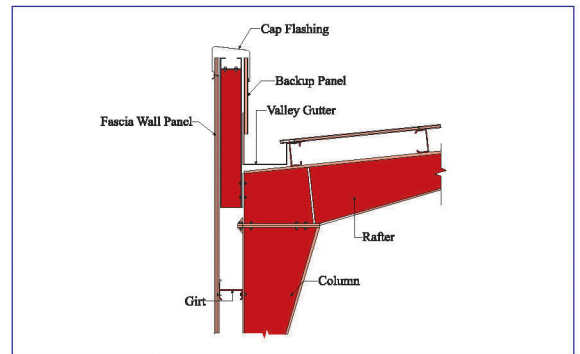


Roof System with Insulation

Structural Subsystem



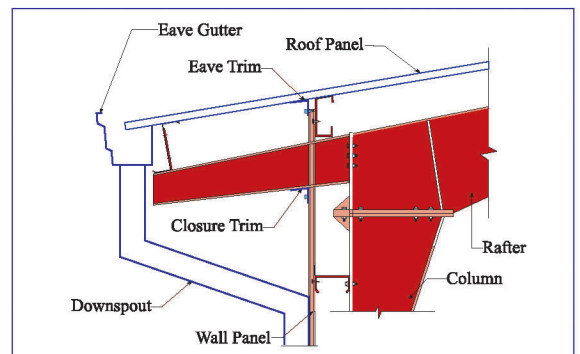
Parapet Fascia



Parapet Fascia



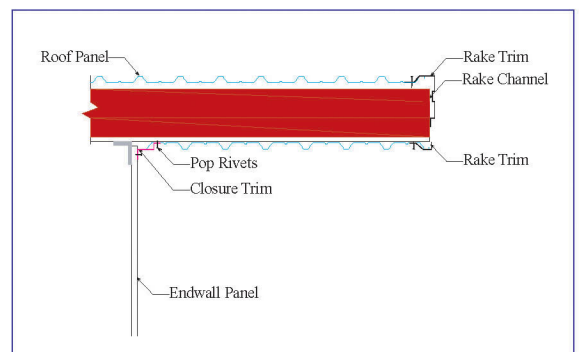
S.W Roof Extension



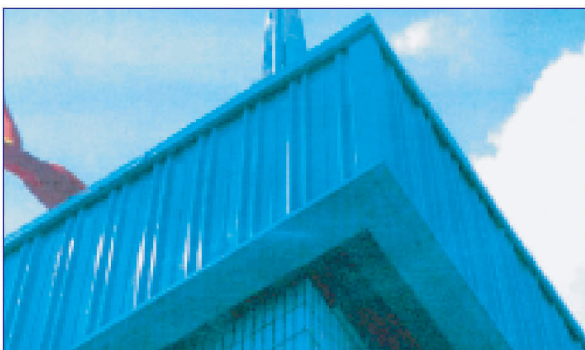
S.W Roof Extension



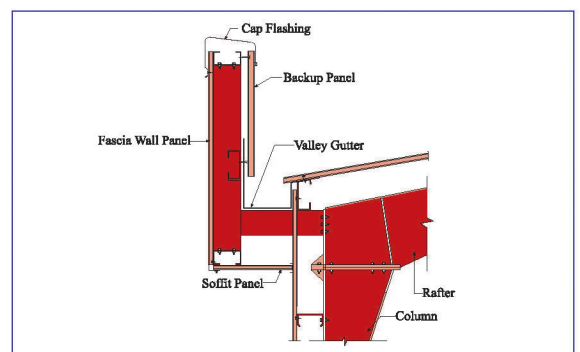
Endwall Roof Extension with Soffit



Endwall Roof Extension with Soffit



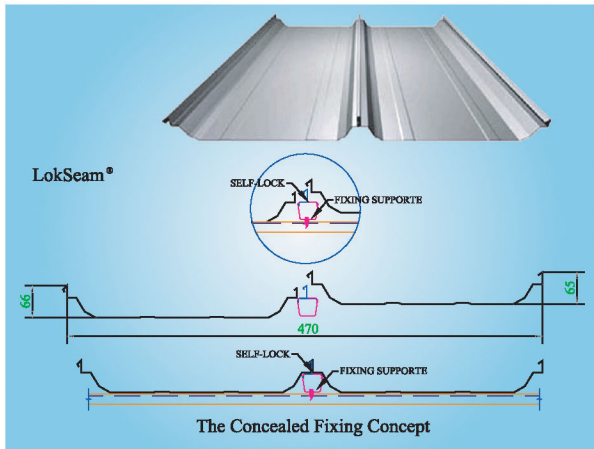
Vertical Fascia



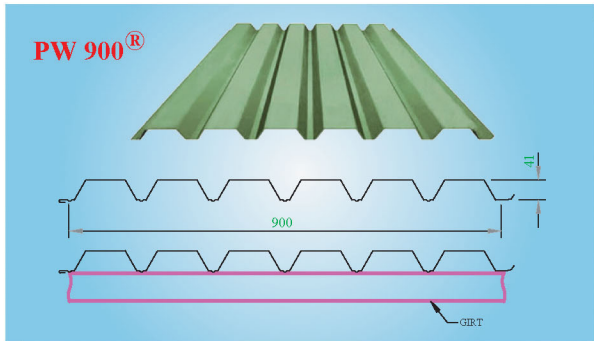
Vertical Fascia

Roof & Wall Panel

Standing Seam



PW 900 Panels:



Azure Blue RAL 5009



Oyster White RAL 1013

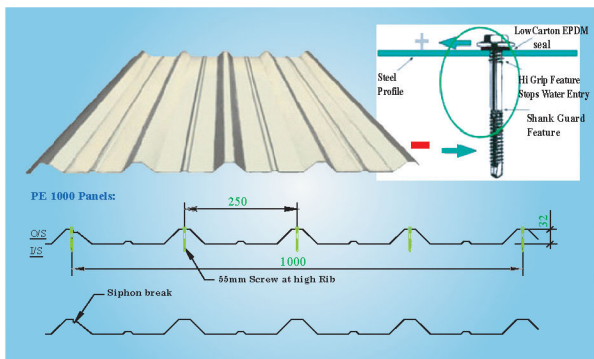


Emerald Green RAL 6001

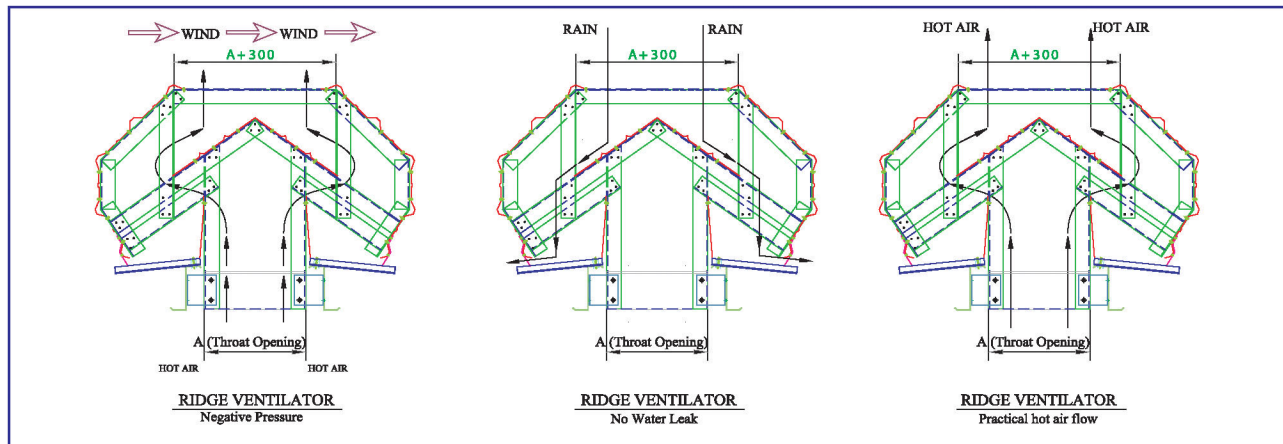


Ruby Red RAL 3003

PE 1000 Panels:

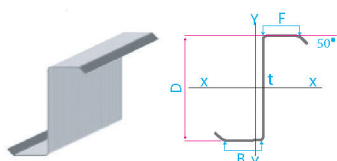


Ridge Vent



Purlin

"Z" SHAPE SECTION PROPERTIES

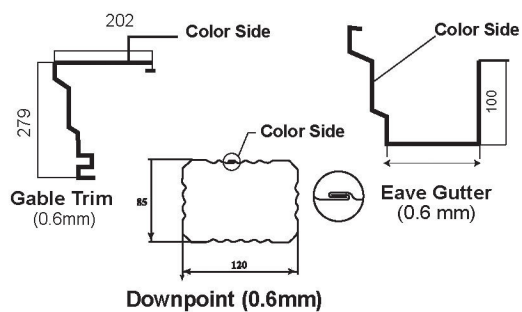


SIZE	D X E X F X L (mm)
Z200	200 X 66 X 60 X 20
Z250	250 X 82 X 75 X 20

t = thickness 1.5/1.9/2.4



Down Spout



Building Accessories

Some aesthetically beautiful, architecturally appropriate and technically engineered building accessories are available in PEBSAL product line.

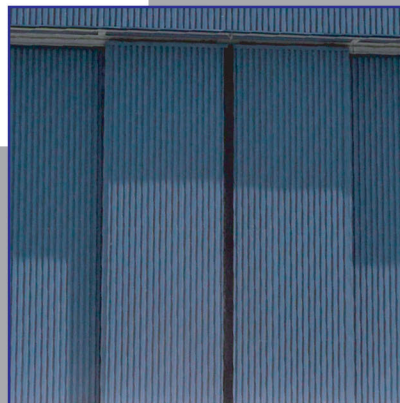
These can fit almost any building designed by PEBSAL and can be customised to the choice of the client to fulfill their individual needs.



Eave Gutter



Stair



Hanger Door



Soffit



Sky Light



Sliding Door



Ridge Vent



Louver



Wall Light



Natural Turbine Ventilators



Crane Girder



PEBSAL YOUR FIRST CHOICE

Certified Company

Latest International Design Codes and Deflection

Diversified Steel Structures

Premium Grade Material

Fully Automatic Production Line

Shot Blasting for All Jobs

In House Fully Equipped Quality Department

Fast Track Projects

Building Erection

Benchmark of Quality and Commitment/Repeat Client

Clientele Base





Certified Company

PEBSAL is an ISO 9001: 2008 Certified Company. On the safety side it is also an OHSAS 18001: 2007 Certified Company. Besides it is the singular PEB related manufacturer who is an Associate Member of the prestigious AISC, Chicago, USA.

Latest Int'l Design Codes and Deflection

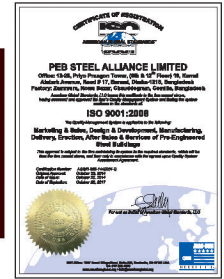
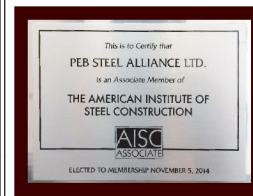
The diverse environment of Bangladesh includes heavy rainfall, high wind speed and seismic load. With due consideration to these adversities, PEBSAL follows the latest international building codes and deflections in all its projects. The in house Design Dept is equipped with Licensed Staad Pro, RAM connection and Tekla Structures software enabling it to design an aesthetically beautiful and safe building.

Diversified Steel Structures

PEBSAL with it's strong design team coupled with a factory equipped with modern machineries is in a position to offer it's customers/ clients a building of any size and configuration. PEBSAL can provide clear span that is over 100m on a curved structure, along with laced column, curved truss and built up truss.

Premium Grade Material

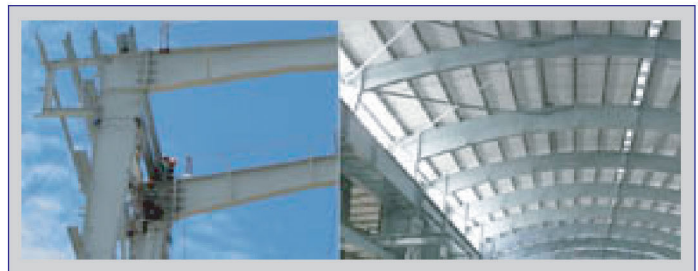
PEBSAL uses only premium, brand new, 50 grade High Strength Steel (HSS) MS plates imported from China, Japan, Korea, Taiwan, etc, for all its built up materials. PEBSAL boasts to be the only company in Bangladesh that provides galvanized Z and C purlins, girts with G-90 (275gm/m²) zinc coating, thus ensuring long life. PEBSAL uses Self Drilling Screws from Buildex of Australia, Bead Mastic from USA to prevent leakage through overlapping panels. Bolts used are imported from Singapore and India



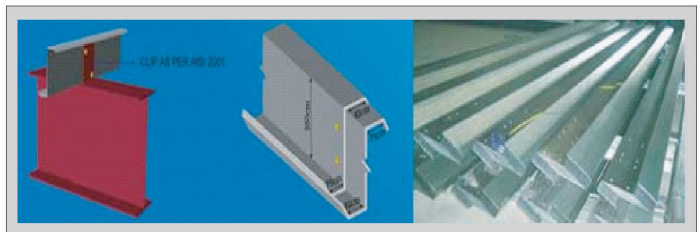
Certifications



Latest International Codes and Deflection



Diversified Steel Structures



Secondary Steels from PEB



Building Accessories

Fully Automatic Production Line

PEBSAL is dedicated to using, facilitating, and implementing the most modern state of the art technology, consisting of the latest innovations and always uses systematic planned usage of its machineries, ensuring quality and design criteria.

PEBSAL uses auto welding lines from Lincoln, USA and other machineries from various renowned companies of China, Italy, Korea, Taiwan and Spain.



Fully Automatic Fitting & Welding Line

Shot Blasting for All Jobs

PEBSAL is dedicated to provide the best possible quality output. Every single fabricated member is processed through shot blasting before these are grinded and painted. It thus ensures the highest quality of the finished product. PEBSAL is the only company that uses shot blasting for all its built up products.



Shot Blasting of Built up Products

In House Fully Equipped Quality Dept

PEBSAL has its in house highly qualified quality department equipped with nearly every piece of equipment necessary to ensure that the quality meets international standards. It can undertake Non Destructive Test of all product with its own equipment and experts.



Quality Check by In House Quality Dept.

Fast Track Projects

PEBSAL is capable of design, supply and erection of fast track projects solution for clients who need a building within minimum possible time.

A Fast Track Project of CMT, a Mauritius Conglomerate, with 12 buildings, Covering an area of 472,385 sq ft have been designed, supplied and built within a time span of only 12 months, bears testimony to this fact.



Fast Track Project of CMT-12 Buildings

Building Erection

PEBSAL is the best equipped company in Bangladesh with respect to PEB building erection both in terms of manpower expertise as well as erection equipments. Engineers and supervisors have project experience in war ravaged Central African Republic and Mali, difficult terrains of Pakistan and Afghanistan and unique terrain of Maldives.

With PEBSAL owned Tower Crane, Mobile Crane, Scissor Lift, Boom Lift, Torque Wrench, Magnetic Drill, etc, it is poised to undertake a project of any magnitude both at home and abroad.

The certification of OHSAS coupled with the qualified safety practicing staff allows PEBSAL to undertake projects with the most stringent safety practices comfortably. All workers are covered by insurance thereby ensuring that, while the safety practices of the valuable clients are met, the value of



Scissor Lift



Man Lift



Hydraulic Crane



Anchor Bolt Setting



Erection with Tower Crane

Benchmark of Quality & Commitment

PEBSAL has established itself as a benchmark in quality and commitment in Bangladesh through the effort of all its members.

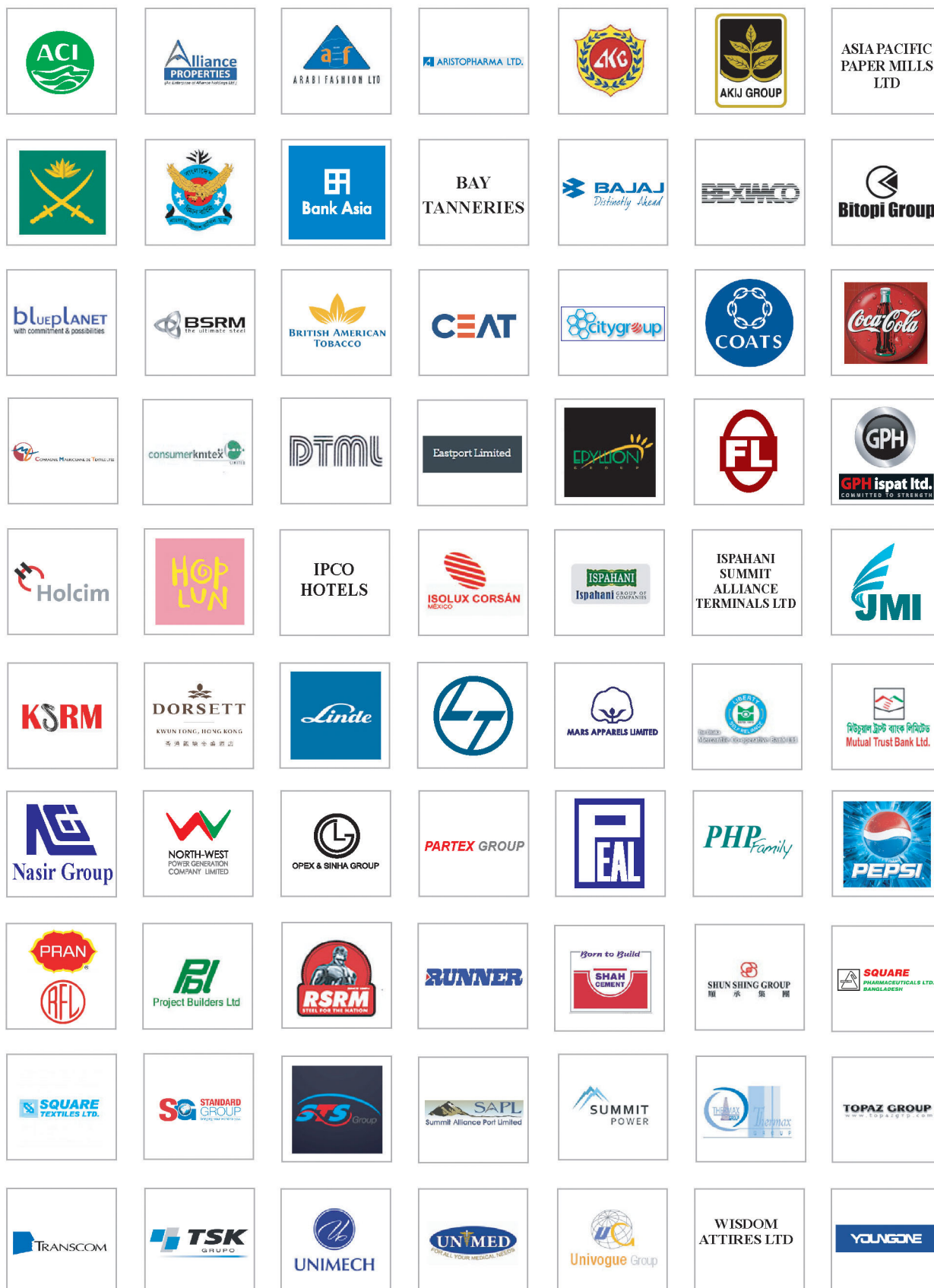
Today PEBSAL has over 85% Repeat Clients, who happen to be the big names in the industrial sector of Bangladesh.



Benchmark of Quality & Commitment

Clientele Base

PEBSAL boasts of a very rich clientele base that includes the top names in the country and world famous brands. Besides most of them are repeat clients, who are testimony of the quality work and fulfillment of commitments of PEBSAL a value imbibed in every member of PEBSAL



PEBSAL PRODUCTS

Hot Roll Structures

In Filled Columns

Non PEB Products

Large Pipes

High Rise Buildings

Standing Seam

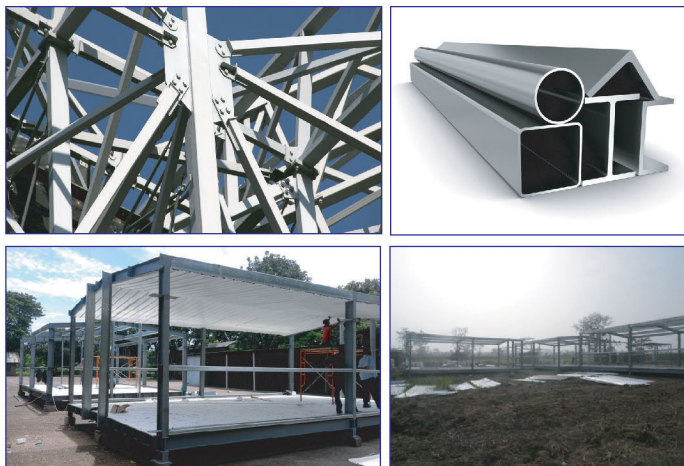
Light Gauge Steel Structures

Porta Cabins



Hot Roll Structures

PEBSAL Hot Roll products comply with all the relevant European standards and can be trusted for its consistent quality. These can be used in the construction of high rise steel structures, bridges, ships, etc. It provides for enhanced end-product performance, extended product life, stronger yet lighter products, opportunities to cut costs, repeatable, trouble-free processing, opportunities to simplify processing, maximized yield, shorter production time, etc.



Hot Roll Structures & Usage

In Filled Columns

In filled steel columns are also added to the product line of PEBSAL. The concrete-filled steel tube (CFT) column system has many advantages compared with the ordinary steel or the reinforced concrete system. One of the main advantages is the interaction between the steel tube and concrete: local buckling of the steel tube is delayed by the restraint of the concrete, and the strength of concrete is increased by the confining effect of the steel tube. This is an effective solution for high rise building construction, bridges, etc.



In Filled Columns in use

Non PEB Products

PEB Steel has also to its credit the production of highly critical non PEB product, which includes chimneys, silos for cement plants, lattice columns, etc.

Though relatively time consuming, the end product meets all the dimensional and technical needs, thanks to the array of equipments at the PEBSAL plant, including testing equipments that, results in a very high quality product in the non PEB product range as well.



Some Non PEB Product Range

Large Pipes

PEBSAL has recently procured two machines to undertake fabrication of pipes. It incorporates a CNC based Plate Bending Machine that can bend both ASTM A36 as well as ASTM A50 grade steel plates up to 30 mm thickness. The Column/Boom Welding Machine with ESAB SAW Power Pac from Sweden is specially designed to undertake pipe welding works. The combination results in the fabrication of metal pipes ranging from a modest 400 mm to a heavy duty pipe with 2,500++ mm diameter. The end product has a very smooth inner and outer surface, uniform roundness and wall thickness of the pipe circumference



Pipe in Production

Large diameter Metal pipes from PEBSAL are best suitable and proven in the following applications:

- All types of major piling from the river bed to projection above ground level, such as use in the construction of bridges, flyover, expressways, etc.
- Process cooling water installations for industrial factories and power plants, irrigation pipelines, waste water pipes, rehabilitation of underground pipes
- Slurry handling pipes (e.g. mining industry)
- Underground and above ground storage tanks, large oil tanker, silo, hopper etc.

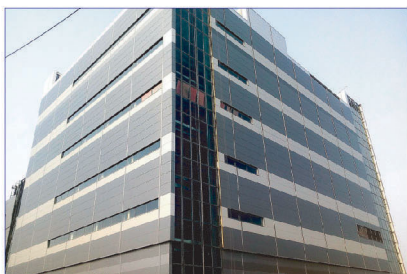
High Rise Buildings

High rise buildings built with steel structure is the technology of the present day more so when the building is located in an earthquake or high wind pressure zone such as Bangladesh. With today's advanced technology and latest innovations it is proven that buildings of over 15 storied, built in steel instead of concrete results in achieving economy in time, resource and cost significantly.

Such huge time savings result in realizing of investment faster and fits perfectly well in the context of Bangladesh where the construction of office building or hotel competes to sustain the growing economy.

The advantages when using structured steel as compared to concrete are listed below:

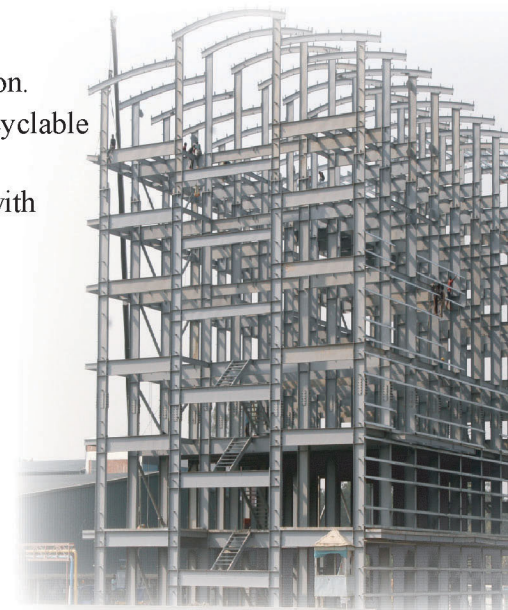
- Lower finance costs.
- Improved sound transmission/attenuation
- Fabricated to precise tolerances in controlled environment.
- All weather construction thus earlier completion and revenue generation.
- More remodeling and re-use flexibility additionally "Green" 100% recyclable materials
- Longer span with fewer columns means less excavation/foundations with more usable clear space.



Multi Storied Factory Building



Multi Storied Hostel



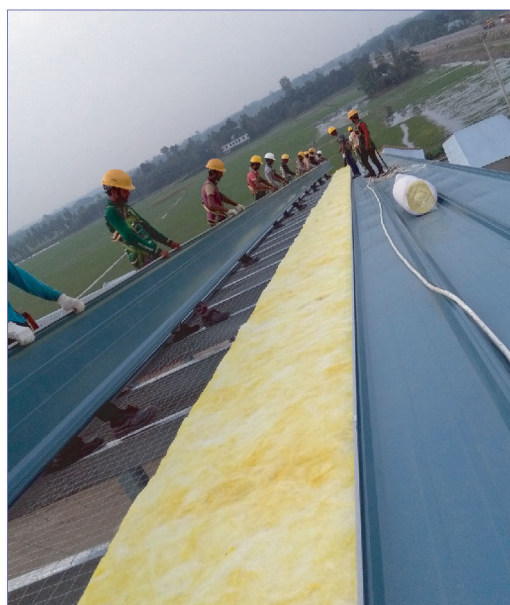
Standing Seam

PEBSAL has recently introduced Standing Seam with Nasir Glass as its first client. It is a relatively new innovation introduced in the United States and has gained huge popularity.

The principal reason for this, is its protection against water leakage. The main feature that makes it preferable are:

- High structural strength provided by higher panel rib.
- Elimination of panel fasteners that are one of the causes of leakage.
- Temperature expansion and contraction of roof addressed through use of moveable clips.
- Full roof single panel possible thereby eliminating lapping of panels and leakage.

High rib allows its use as an architectural panel in addition to its high structural strength.



Standing Seam Fixing in Progress

Light Gauge Steel Structures

PEB Steel Alliance is proud to have innovated the concept of a light gauge building solution for the earthquake victim rehabilitation in the ADB funded projects in Pakistan.



The mountainous terrain with inadequate road network needed a structure capable of withstanding high intensity earthquake, sufficient snow load and insulation but at the same time light enough to be carried to remote areas on mules or head loads.

The solution was provided through these light weight pieces that were no more than 10 kgs but when fixed with self drilling screws would turn into a formidably strong buildings meeting the stringent criteria set by ADB.



These buildings provide a light weight solution in an innumerable variety of uses specially in the hilly and coastal terrain that can include accommodations, hospitals, community centers, etc.

Porta Cabins

PEB Steel Alliance Ltd has designed, fabricated and delivered Porta Cabin to Bangladesh Armed Forces for its use in UN Mission in Central African Republic and Mali in accordance with UN Specifications. These included single accommodation units of 600 sq ft, multiple units and ablution units.



With elementary training, it can be erected by 6-8 persons in a short time of 6-8 hours. PEBSAL also provides training on the erection methodology at its facility in Comilla.



These Porta Cabins have a considerably long life span and are unique in that, it can be repeatedly assembled, dismantled and re-erected time and again, making it reusable and economically most viable. It can be used in a variety of ways both singularly or by assembling more than one unit in tandem to build Hospitals, OTs, Mosques, Mess, etc.

PEBSAL PROJECTS

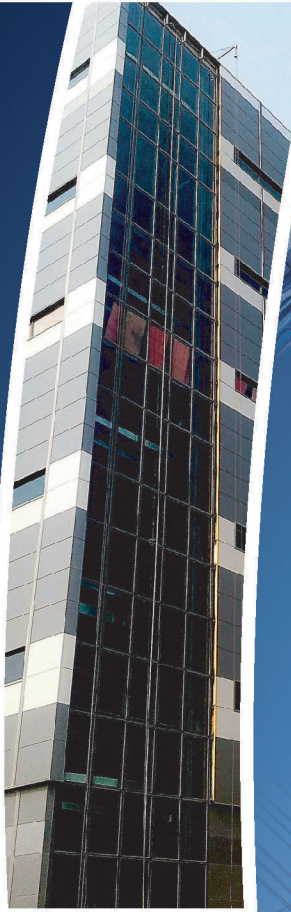
Selected Projects (1,000 MT to 3,000 MT)

Selected Projects (3,000 MT to 10,000 MT)

Selected Projects (Above 10,000 MT)

Selected Diverse Projects





Selected Projects (1,000-3,000 MT)



KSIL | Warehouse (5th Phase) | KEPZ, Chittagong



Univogue | Garments Building | CEPZ



Abul Khair Steel | Factory | Kadamrasul, Sitakunda



Shah Cement | Cement Plant | Munshigonj



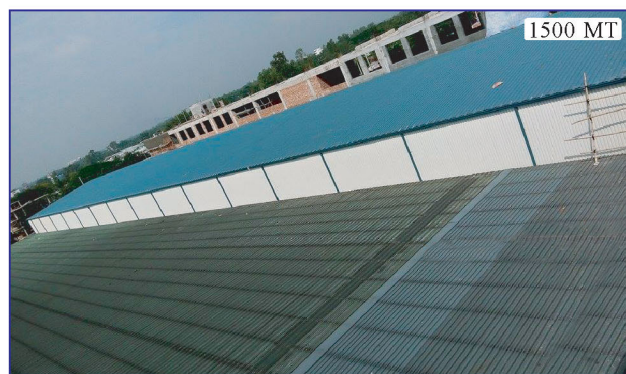
KSIL | Warehouse (3rd Phase) | KEPZ, Chittagong



Square Pharma Ltd. | LVPE | Kaliakoir, Gazipur



KSIL | Knitting Complex | KEPZ, Chittagong



Square Fashion | Denim Plant | Location: Hobigonj

Selected Projects (3,000 - 10,000 MT)



ACI Healthcare Ltd. | OSD Building | Narayangonj



CMT | Warehouse & Utility Buildings | Mymensingh



Nasir Glass Industries Limited | Factory | Tangail



Cocacola | Factory Building | Valuka, Mymensingh



BSRM | Factory Building | Chittagong



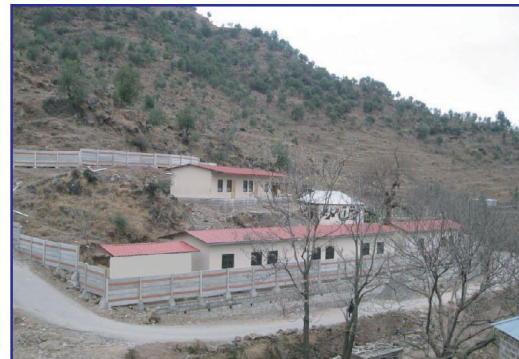
DTML | Garments Factory | Sreepur, Gazipur

Selected Projects (Above 10,000 MT)

- An ADB funded project for re-building earthquake devastated schools in Pakistan



- Schools built in 380 different sites and 1,500 structures (approximately)
- Cumulative weight 10,000 MT covering an area of 1,556,450 sft.



- Exported steel structures worth US\$ 19.8 million under 11 projects

Selected Diverse Projects



Aircraft Hanger | YOUNGONE | Airport, Kurmitola



Automobile Shed | PHP | Chittagong



Biscuit Factory | Unimech | Gazipur



Canteen | KSIL | KEPZ, Chittagong



Canteen | Univogue | CEPZ, Chittagong



Cement Silo | Meghna Group | Meghna Ghat



Connection Bridge | DTML | Sreepur, Gazipur



Container Shed | SAPL | Patenga, Chittagong

Selected Diverse Projects (Continued)



Convention Centre, Hall 24 | Area HQ | Chittagong



Cooling Bed Truss | BSRM | Nasirabad, Chittagong



CR Shed | PHP | Chittagong



Factory | BSRM | Nasirabad, Chittagong



Foot Bridge | CKL | Sreepur, Gazipur



Garments Factory | Topaz Group | Mawna, Gazipur



Garments Factory | Mars Apparels | Nasirabad, Chittagong



Garments Warehouse | ISATL | Chittagong

Selected Diverse Projects (Continued)



Godown | Fresh | Meghna Ghat



Hostel Building | CKL | Trishal, Mymensingh



Melting Shop Factory | Nasir Glass Factory | Tangail



PGP Shed | Linde | Roopganj, Narayanganj



Power Plant | Summit Group | Narayanganj



Power Plant (50 MW-Gas) | TSK (Spain) | Ashuganj



Production Plant | K R Flexipack | Chittagong



RAR Alliance Tower | RAR Holding | Gulshan-1, Dhaka

Selected Diverse Projects (Continued)



Raw Material Shed | PHP | Chittagong



Rerolling Factory Building | BSRM | Chittagong



Shoe Factory | Young One | Chittagong



Steel Sculptor | Jahangir Gate | Dhaka Cant.



Studio | Asiatic Ltd. | Jirabo, Savar



Warehouse | Bangladesh Lamps | Dhaka



Warehouse | Expo Lanka | Savar



Warehouse | PEPSI | Gazipur



PEB STEEL ALLIANCE LTD

Corporate Office:

The Alliance Building (4th & 5th Floor)
63 Pragati Sarani, Baridhara, Dhaka 1212
Tel: 00880-2-55048444, 00880-2-55048445

Factory:

Zamura, Nowabazar, Chouddagram,
Comilla, Bangladesh.

